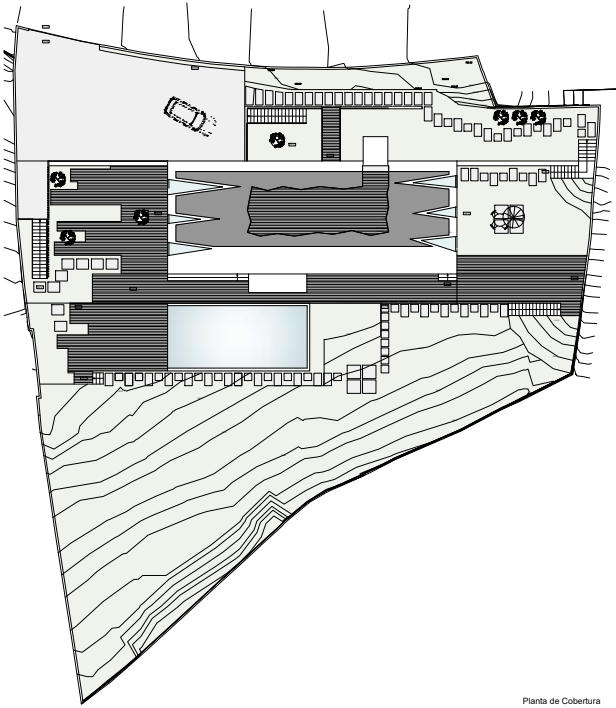


Papagaio Verde House

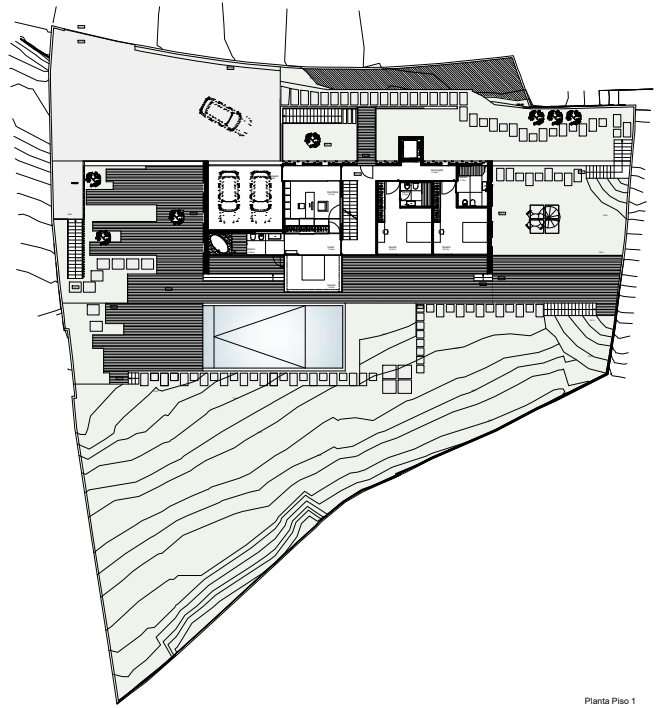
Location: Madeira Island, Funchal, Portugal

The Papagaio Verde House was born from a dream. A dream that stretched over the city of Funchal, from above, across the immensity of the sea, crossing avenues, city lights, wrapped in the heavenly tranquillity of the hillside. The terrain was steep, and the first challenge was to accommodate the programme. A luxury dwelling, simple, spacious, crystalline, and bold. A house that retracts and hides for those who access it, but which opens completely, like a belvedere to the landscape, which is offered to it on the opposite side. Like a piece of volcanic rock, reddish brown, with forming hollows, the house has emerged and opened, creating its crevices, covered by glass that reflects the sky. And the dense block of rock became crystallised at that precise point, allowing the creation of life and contemplation inside.

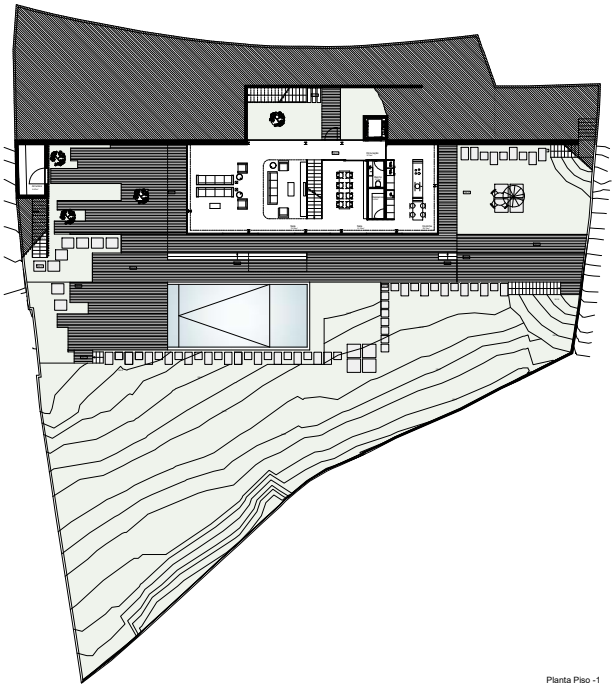
The constraints of the terrain led to its implantation and functional distribution. The three-storey house has only one floor above the ground and it is adapted to the steep terrain on the lower floors, gaining amplitude. The access platform leads to the garage, from which the lower patio can be glimpsed, and which lights up the large living room on the floor -1. A bridge leads to the entrance to the house, which opens through the wooden cross lath on level 1. The bedrooms are on this floor. The suite is a large crystal cube that towers above the glass façade. A cube that defies gravity, with a mirror on the lower part that reflects the image of whoever looks at it from below. On this floor, the bedroom compartments and the en-suite bathroom extend onto the long balcony, which is cut into the rough block of "stone". The almost dematerialized staircase, in wood slats, leads to the floor of the large living room, which opens bright and clear to the patio, where the swimming pool and the barbecue are located. The landscape is unique, and the sloping garden contributes to the "landscape picture". The kitchen was designed to detail, and the large island is its centre of attention. It concentrates the art of cooking and the dining area, in a wing-shaped design gesture that makes it almost levitate. The bet on the island as a singular element led to the creation of the "Loro Kitchen" signed by the design team. This entire floor has been transformed into a white dream, where purity seems to reign supreme. On the traditional "basement" floor, the concept was completely changed, and the spaces are open and bright, taking advantage of the slope of the land and its proximity to the pool tank. The gymnasium, the games and TV room and a guest bedroom were installed on this floor. Finally, connecting the three floors is the lift, which, in a towering volume torn by horizontal glass, mysteriously allows connection to the chill-out on the roof terrace. It is here, in this open space, that you can calmly stay at the end of the day, contemplating the cosy arrival of night, which slowly involves the island and transforms the immense sea landscape into the black space that frames the moon.



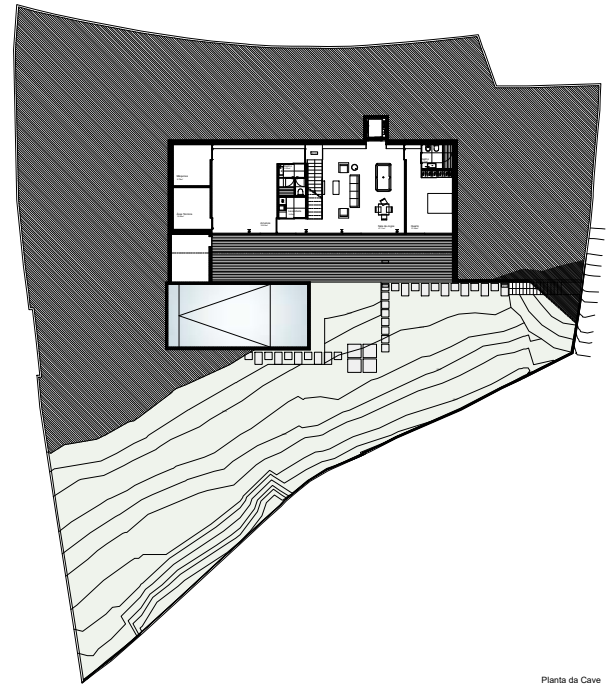
Planta de Cobertura



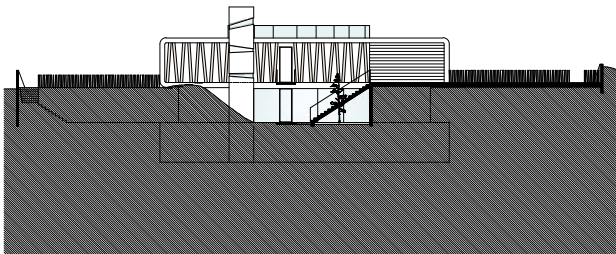
Planta Piso 1



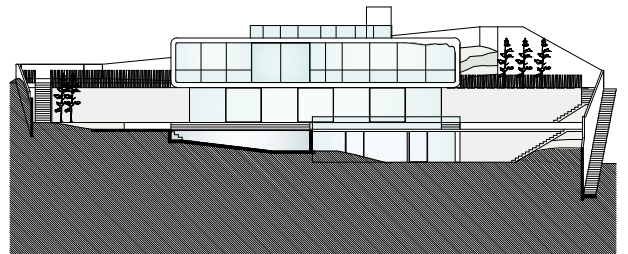
Planta Piso -1



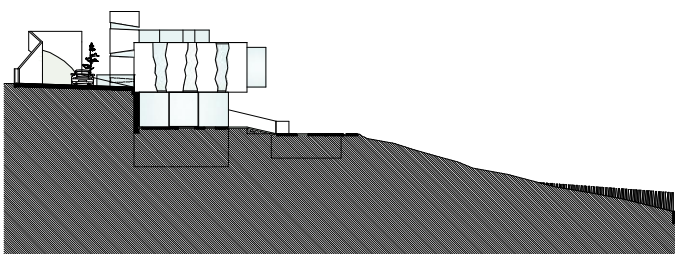
Planta da Cave



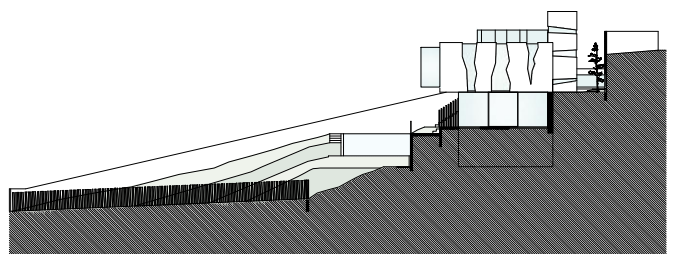
Alçado Norte



Alçado Sul



Alçado Poente



Alçado Nascente













