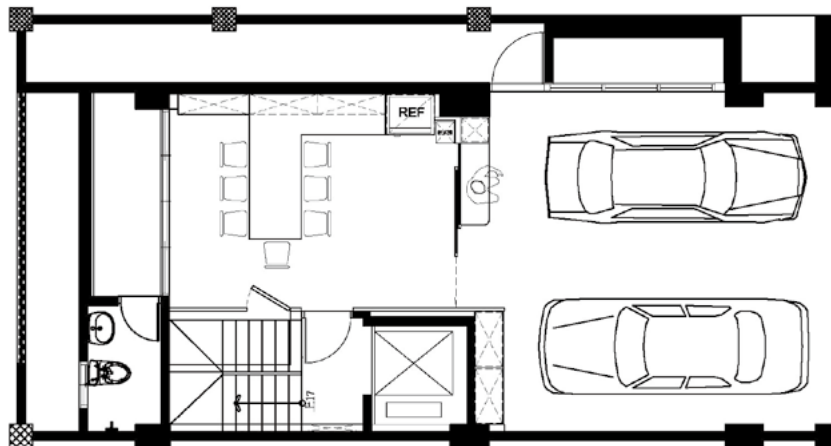




An Arborous Feast for the Heart



An Arborous Feast for the Heart is a six-story house villa of 380 square meters, with its first story for a garage and a section for receiving and entertaining guests.



The second floor has an open-floor layout that includes the living room, the dining room and the kitchen, so that the French window brings in sufficient light to the middle and the back of the space. The entire space features openness and brightness achieved by gray, white, and light-and-dark wood veins.



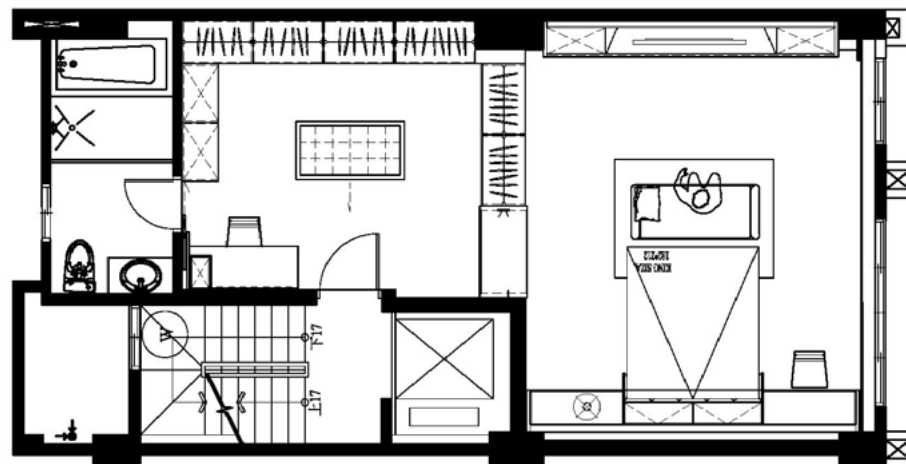
The house is long and narrow, and natural light comes in through the building's narrow sides. To make the space look open and bright as well as create a vibe of roaming in the woods dancing with nature is a challenge in the design.



The vaulted ceiling in the living-dining room serves to trim the beam, while its light-toned wooden veneer and indirect lighting elevate the space visually. The TV wall in the living room is characterized by dark-gray marble, coherent with the display-storage cabinetry of dark wooden veneer and glass doors behind the sofa, accentuating how grand the space is. Between the TV wall and the dining room is a column decorated with dark-toned grilles that go further into the dining-room side cabinetry.



The kitchen, indented due to the stairway, also has white walls that achieve visual balance and expand the space.



The third to the sixth floor each for a suite with a bath.



For privacy's sake, the third-floor master bedroom has a flow that begins with the dressing room and proceeds into the bedroom. The dressing room has cabinetry featuring dark-brown wood veins and glass that complements the island cabinetry. The closet, dividing the two areas, has transparent glass on the dressing room's side to allow for a clear view of clothing and easy fetch-and-storage, while on the bedroom's side is fluted glass, transmitting natural light and openness from the French window while retaining privacy.

In the master bedroom, the stone-vein wall at the headboard, the white marble on the TV wall, the dark wood-vein cabinetry on either side, and the recessed lights on the two black trims on the ceiling make for luxury and grandeur of a boutique hotel.



In the fourth-floor bedroom, the light-blue country-style headboard plays against the popping-color door panel at the end of the bed. The light-toned walls and closet door panels, along with the couch by the window, present a refreshing and laid-back touch.



The layout on the fifth floor is similar to that of the third-floor master bedroom, with the same transparent glass and fluted glass to make the space look open, but brown wooden veneer is applied to the entire wall and the cabinetry to add a tree-house, tree-hole feel to the room.





There is sufficient natural light on the sixth floor, and its bedside vanity and closet are integrated, looking freshening, comfy and refined.



The designer uses wooden veneer of light and dark veins to shape varied feels for the different sections. Diverse materials such as marble, iron and glass are applied alternately, delineating a countenance of grandness and composure, while the thoughtful flow and color scheme make the long narrow space bright and spacious, cozy and pleasant. The entire mansion is shaped into a villa that is modern but mellow, without looking too sharp or high-profile.