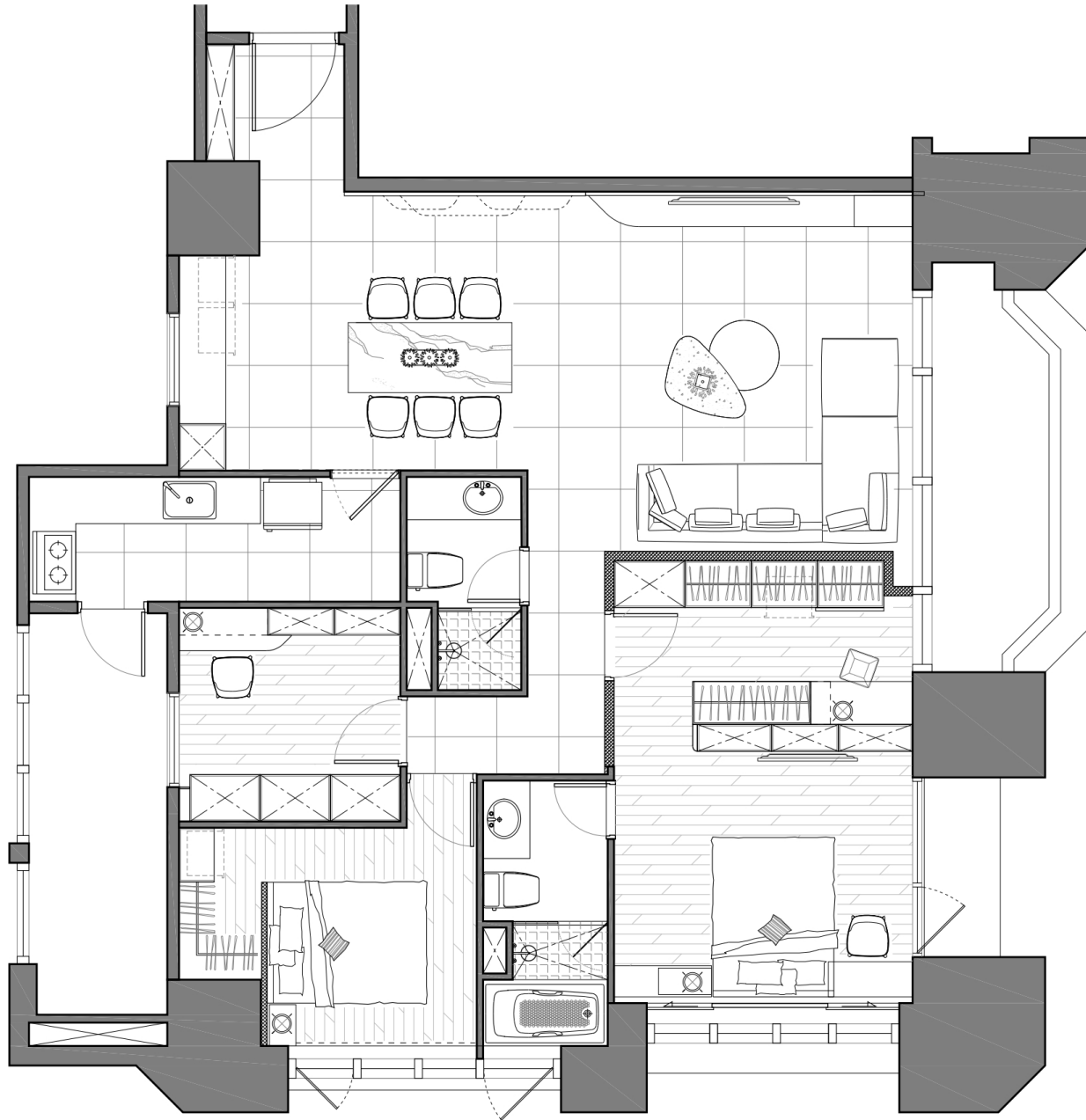




Timeless Flow



Floor Plan



Public space

- The connection of line plates, titanium-plated metal and curved shapes blurs the boundaries of space and hides multiple entrances and storage volumes, greatly expanding the view and comfort of the public space.
- The exquisite neoclassical style and marble texture create a soft and flowing impression.





- The design of the kitchen preparation cabinet is planned in the external dining area, which solves the storage problem in the kitchen and becomes an expansion for daily light food and storage functions.
- The display platform can also become a visual end scene in the public space.

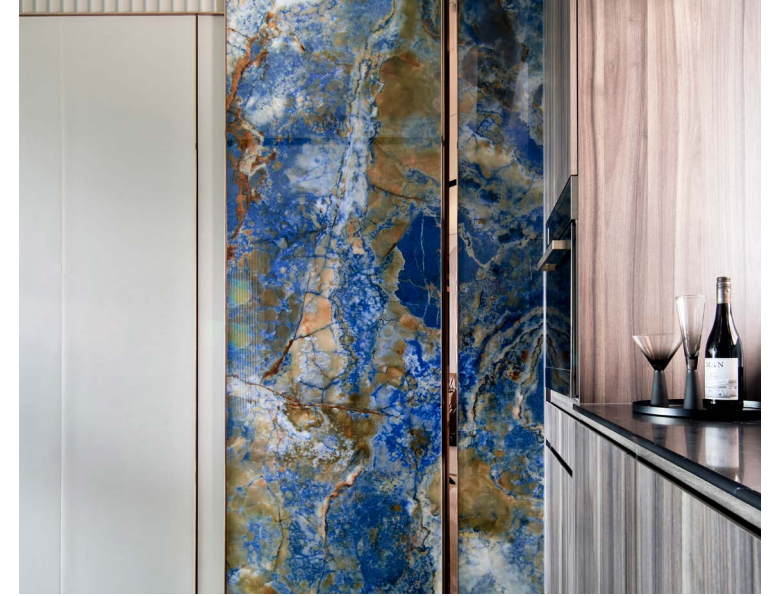


Bedroom

- The scope of the master bedroom is expanded, and a huge functional body is placed, which incorporates the functions of TV wall, storage, display and dressing table in three dimensions.
- The functional body is seperated from the ceiling, making the lighting could spread the whole spaces.



- A hidden door design is also added at the head of the bed, and users can adjust the lighting and privacy according to their needs.



Materials

- This case incorporates rich elements of different materials, such as marble sheet bricks, titanium-plated metal, grilles, line plates, etc.
- Through simple color expression, neat linearity, and neo-classical symmetry order, it converges into a simple and clean visual.

