

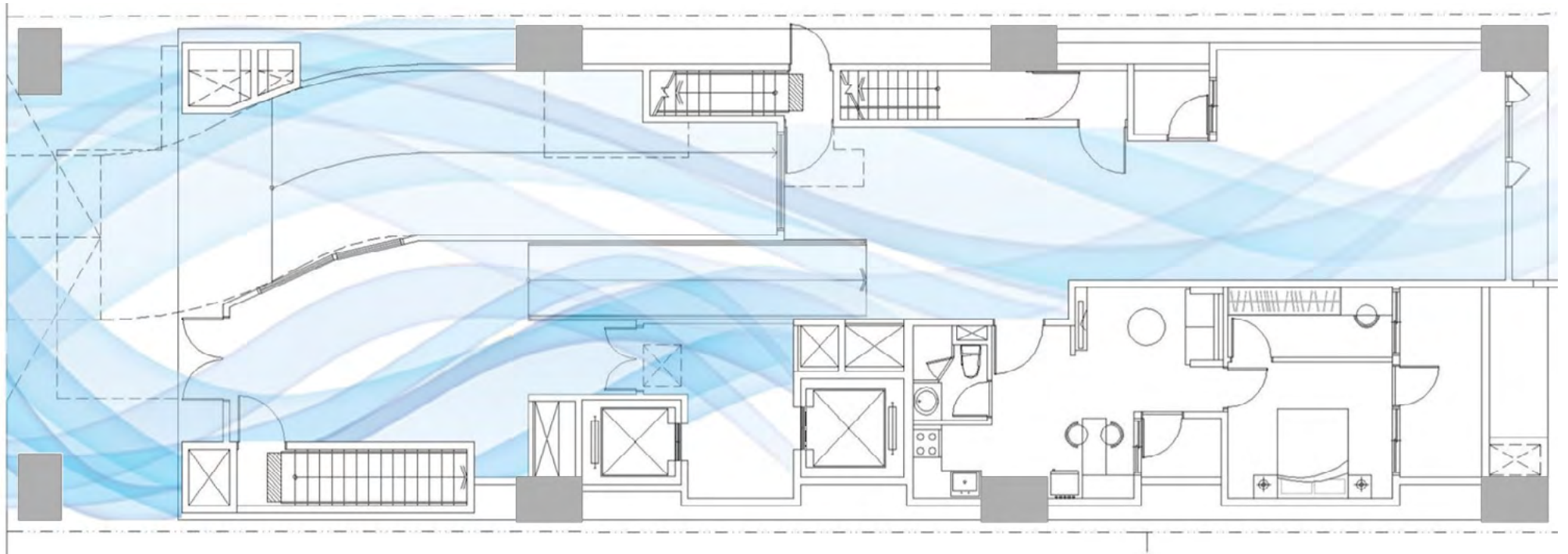


# *The Flow*



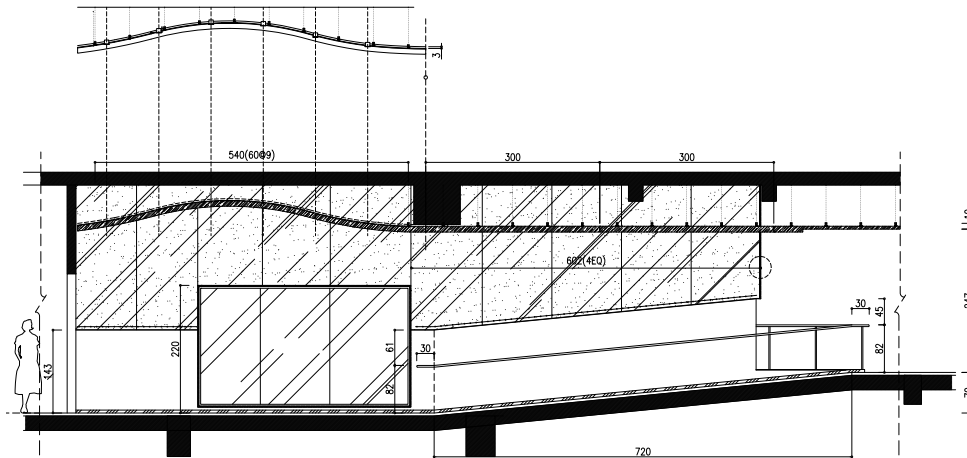
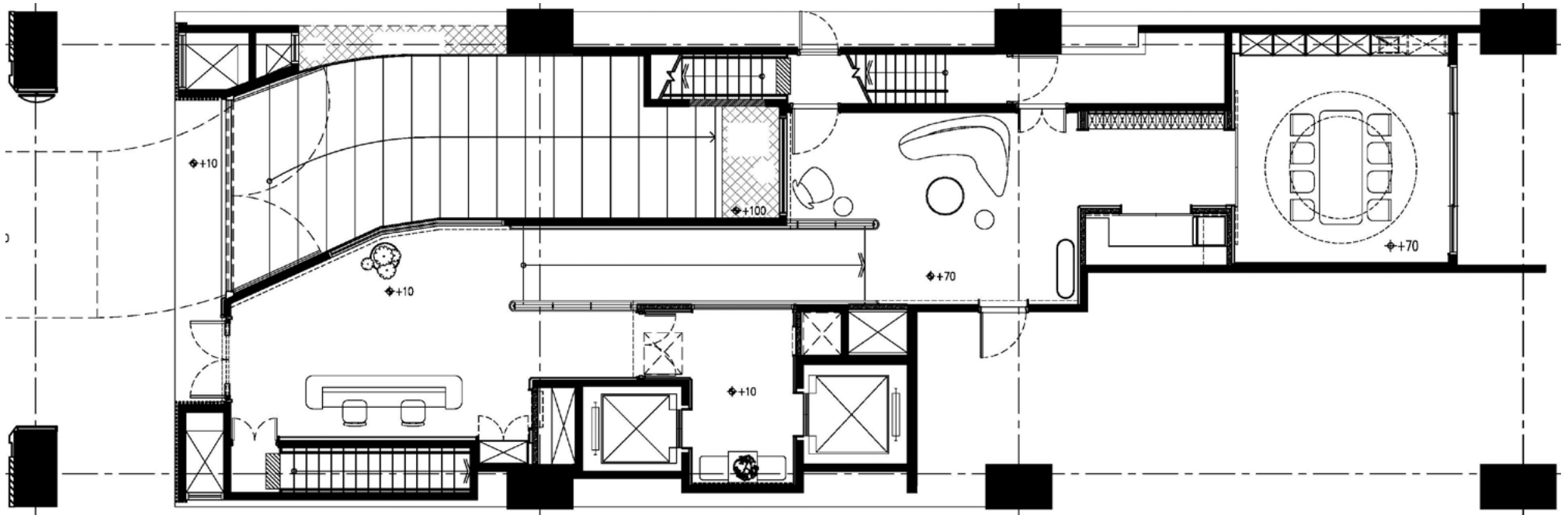


The site is an apartment building adjacent to Zhongshan North Road, an important north-south road throughout history, on the west side of Taipei city. The road was called Chokushi Kaido (Imperial Envoy Avenue) when Japanese crown prince Hirohito (later Emperor Showa) took to visit the Taiwan Grand Shrine. After World War II, it changed the name to Zhongshan North Road, often called “Foreign Relation Boulevard” where the US Ambassador's residence and American Embassy was located.

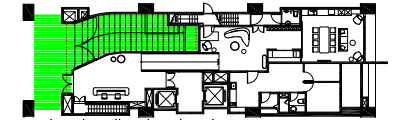
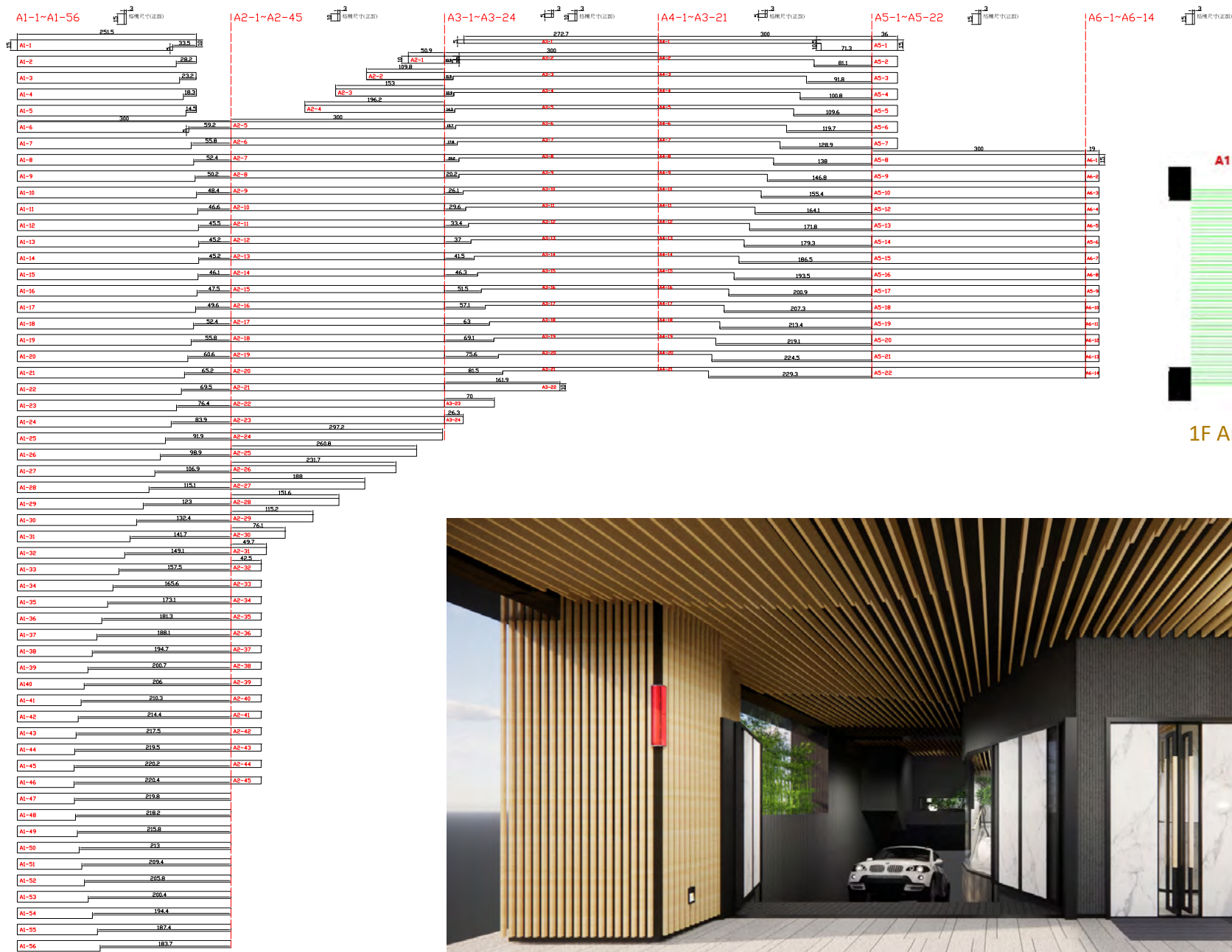


With the metaphor of the flow of time traffic movement is just like a river, the designer is taking the idea of water being fluid, transparent, and reflective to design the common spaces.





Wood grill ceiling with curved wavy three dimensional shape from exterior all the way to reception and continuing through the social area and mail room represent the water flow.



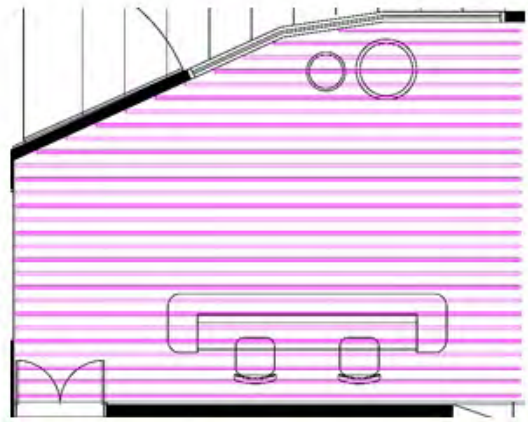
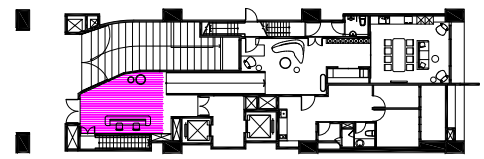
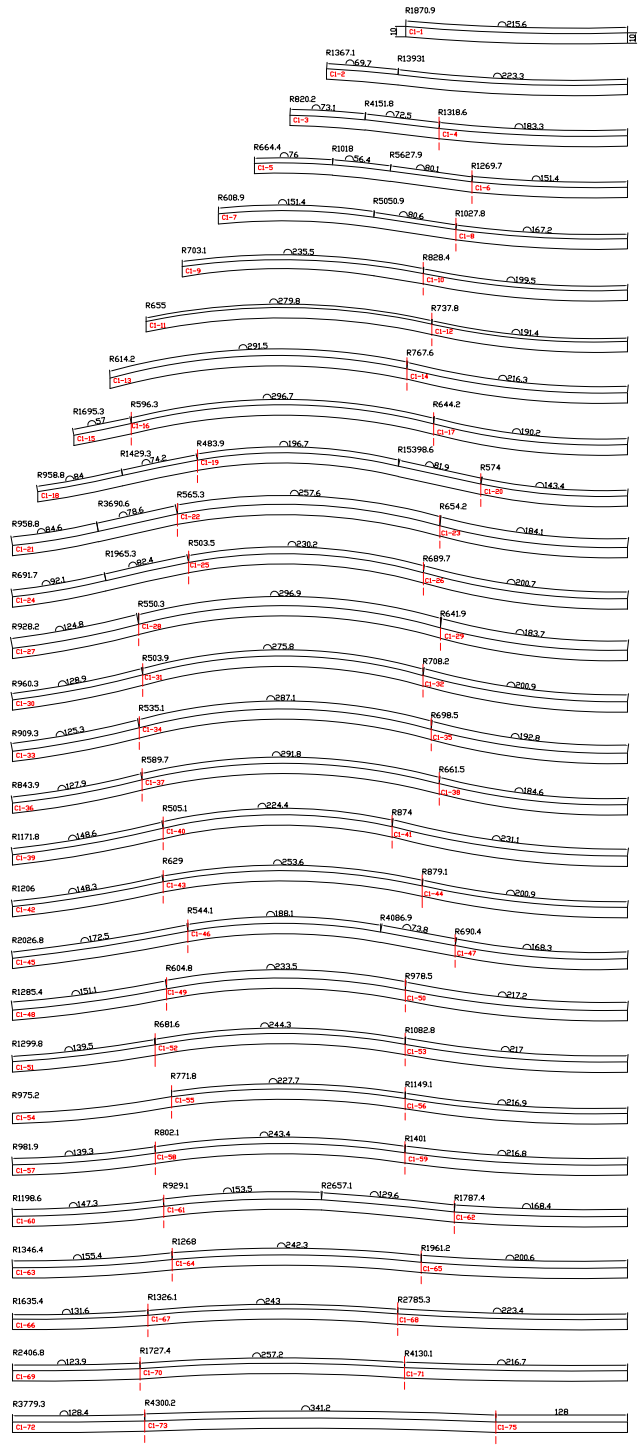
1F Area A: Grille Ceiling Floor Plan





C1-1~C1-75

3  
格栅尺寸(单位)



By utilizing the large-scale panels of fire-rated glass doors and windows to elongate the space and keep the visual transparency for security purpose.

1F Area C: Grille Ceiling Floor Plan

B1-1~B1-28

格栅尺寸(正距)

B2-1~B2-25

格栅尺寸(正距)

B3-1~B3-25

格栅尺寸(正距)

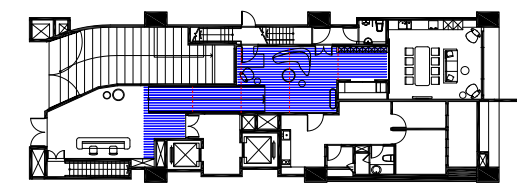
B4-1~B4-25

格栅尺寸(正距)

B5-1~B5-12

格栅尺寸(正距)

|       |     |       |       |       |       |       |       |       |       |
|-------|-----|-------|-------|-------|-------|-------|-------|-------|-------|
| B1-1  | 300 | B2-16 | 300   | B3-1  | 175.2 | B4-1  | 197.2 | B5-1  | 132.8 |
| B1-2  |     | B2-17 | 287   | B3-2  | 194   | B4-2  | 142.3 | B5-2  | 130.5 |
| B1-3  |     | B2-18 | 94.9  | B3-3  | 21.5  | B4-3  | 300   | B5-3  | 128.8 |
| B1-4  |     | B2-19 | 104.9 | B3-4  | 24    | B4-4  | 161.2 | B5-4  | 127.5 |
| B1-5  |     | B2-20 | 107   | B3-5  | 26.7  | B4-5  | 163.8 | B5-5  | 126.8 |
| B1-6  |     | B2-21 | 115   | B3-6  | 29.8  | B4-6  | 165.6 | B5-6  | 126.6 |
| B1-7  |     | B2-22 | 122.4 | B3-7  | 33.1  | B4-7  | 166.6 | B5-7  | 127   |
| B1-8  |     | B2-23 | 125.2 | B3-8  | 37.1  | B4-8  | 166.5 | B5-8  | 128.2 |
| B1-9  |     | B2-24 | 135.9 | B3-9  | 41.3  | B4-9  | 165.6 | B5-9  | 129.9 |
| B1-10 |     | B2-25 | 142.5 | B3-10 | 45.8  | B4-10 | 163.8 | B5-10 | 132.5 |
| B1-11 | 249 |       |       | B3-11 | 50.8  | B4-11 | 161.5 | B5-11 | 136   |
| B1-12 |     |       |       | B3-12 | 56.1  | B4-12 | 158.4 | B5-12 | 139.4 |
| B1-13 |     |       |       | B3-13 | 61.7  | B4-13 | 143.7 |       |       |
| B1-14 |     |       |       | B3-14 | 67.6  | B4-14 | 139.1 |       |       |
| B1-15 |     |       |       | B3-15 | 73.8  | B4-15 | 134   |       |       |
| B1-16 |     |       |       | B3-16 | 80.1  | B4-16 | 128.3 |       |       |
| B1-17 |     |       |       | B3-17 | 86.7  | B4-17 | 122   |       |       |
| B1-18 |     |       |       | B3-18 | 93.9  | B4-18 | 115.3 |       |       |
| B1-19 |     |       |       | B3-19 | 100.9 | B4-19 | 108   |       |       |
| B1-20 |     |       |       | B3-20 | 107   | B4-20 | 102.2 |       |       |
| B1-21 |     |       |       | B3-21 | 115   | B4-21 | 92    |       |       |
| B1-22 |     |       |       | B3-22 | 122.4 | B4-22 | 83.4  |       |       |
| B1-23 |     |       |       | B3-23 | 125.2 | B4-23 | 74.4  |       |       |
| B1-24 |     |       |       | B3-24 | 135.9 | B4-24 | 65.1  |       |       |
| B1-25 |     |       |       | B3-25 | 142.5 | B4-25 | 55.4  |       |       |



1F Area B: Grille Ceiling Floor Plan

- B1-1
- B1-2
- B1-3
- B1-4
- B1-5
- B1-6
- B1-7
- B1-8
- B1-9
- B1-10
- B1-11
- B1-12
- B1-13
- B1-14
- B1-15
- B1-16
- B1-17
- B1-18
- B1-19
- B1-20
- B1-21
- B1-22
- B1-23
- B1-24
- B1-25
- B1-26
- B1-27
- B1-28



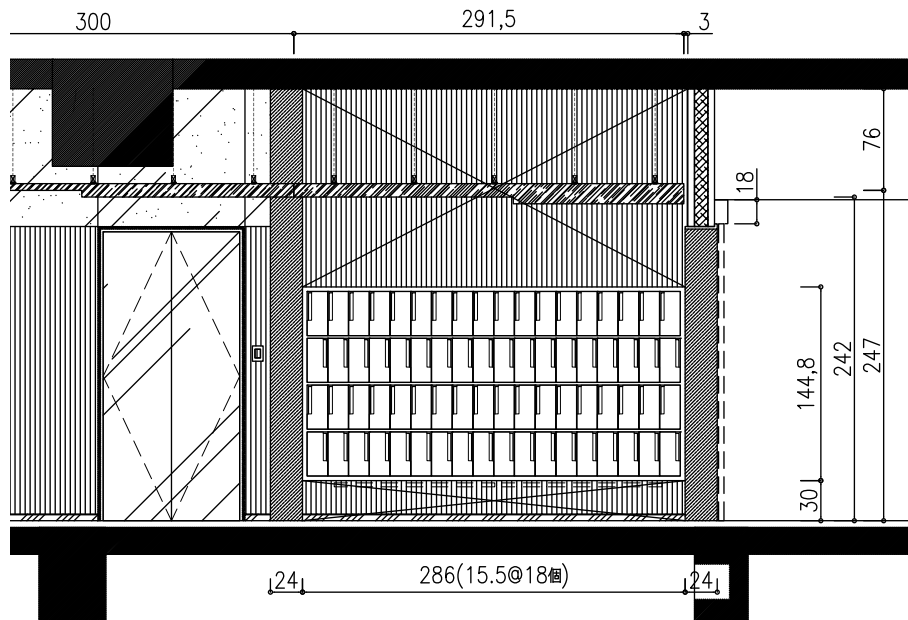
Wood grill ceiling with curved wavy three dimensional shape from exterior all the way to reception and continuing through the social area and mail room represent the water flow.





Having reflective finished walls at the social area visually widened the space.





The ceiling also extended to the basement parking area with unaligned light fixtures and the alternate mailboxes opening gives the space a sense of flowing rhythm.



For energy saving and carbon reduction, such as light-colored walls require less lighting needs, local production tiles with lower carbon footprint, the environment-friendly issues are what we focus on in design.





The design concept derived from achieving the reduction of carbon emissions. Flow like water, symbolize a recyclable resource. By conscious selection of renewable construction materials like wood, stainless steel, tiles, glasses to carry out the environmental sustainability.



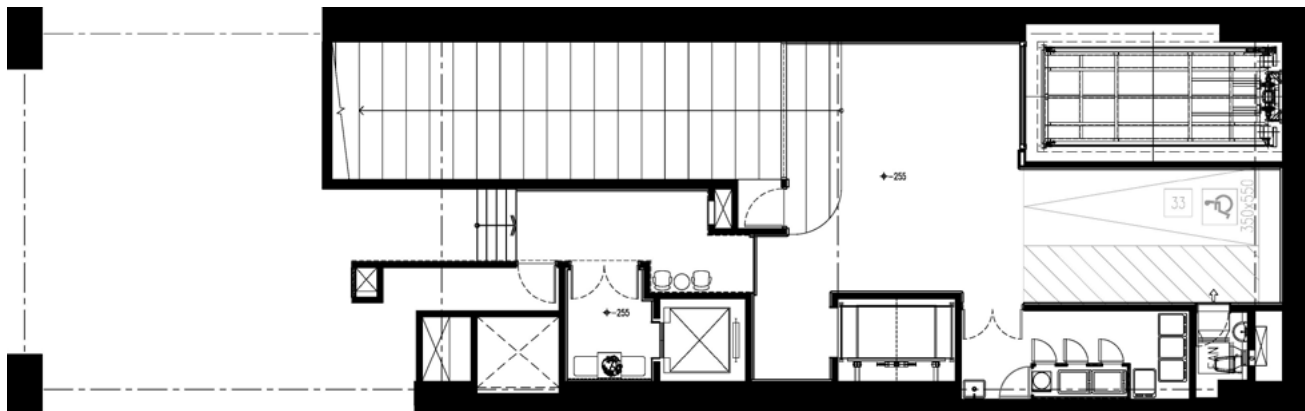
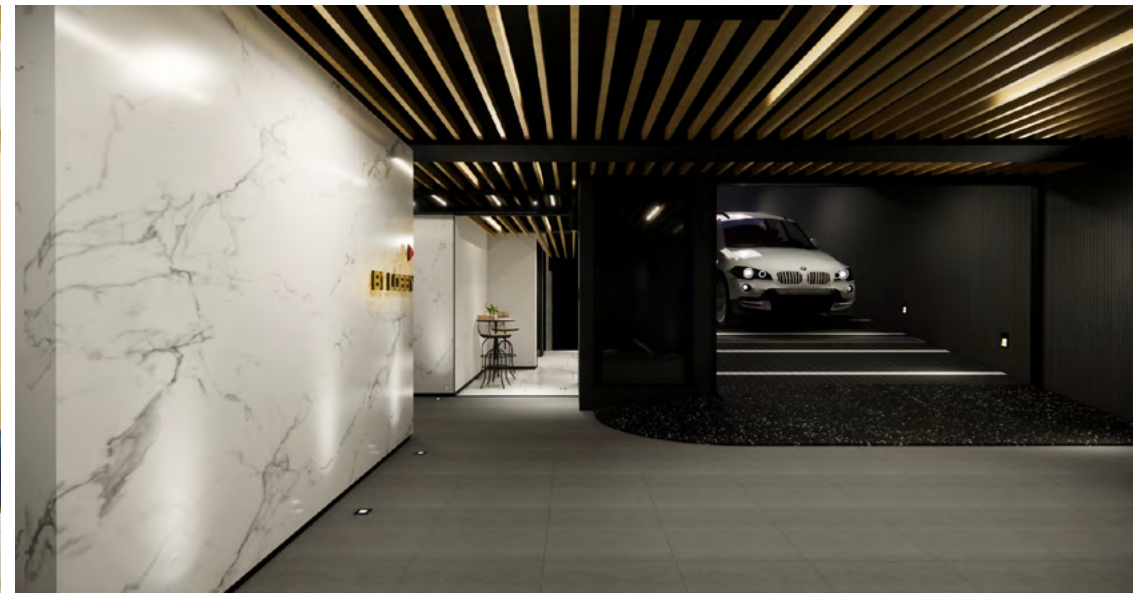


Ripples-looked stainless corrugated panels on the side wall and ceiling of the elevator hall from the second floor and above is another way to portray moving water.





The lighting of parking lot also presents a flowing rhythm with an asymmetrical design.



As well as the ceramic-tile walls with white marbling add the visual extension from reception, elevator hall to transition zone of basement.



