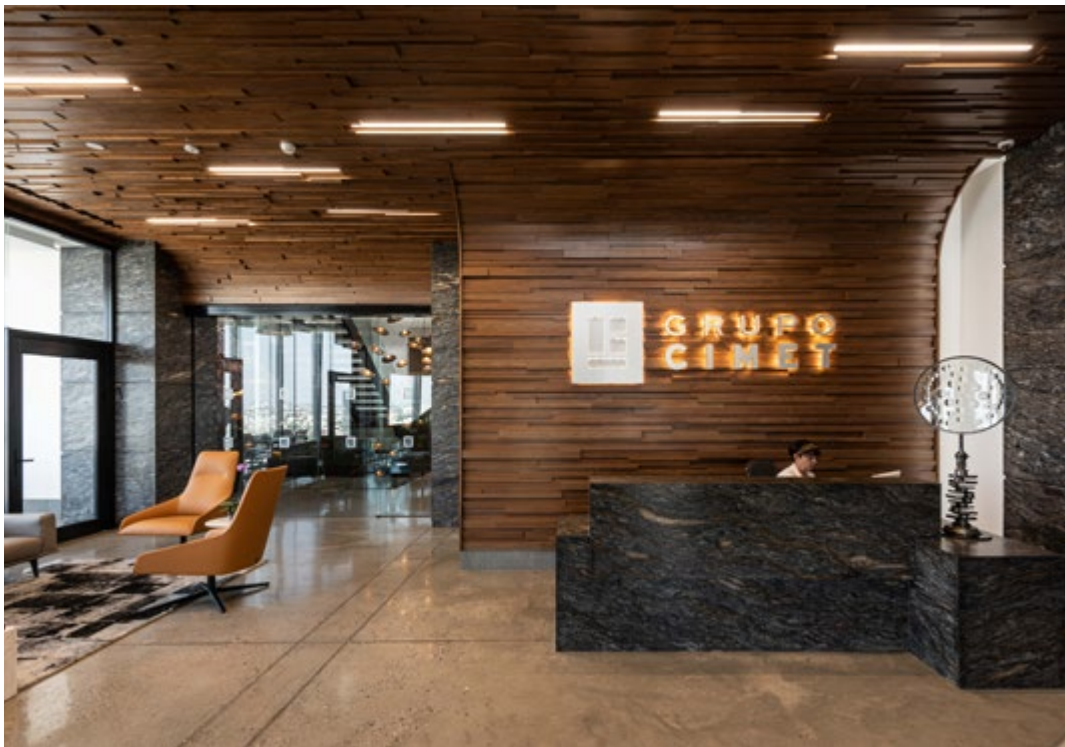


CIMET Group Headquarters

Mexico City, Mexico





A workspace that takes a wide range of activities into account for its design

CIMET group is consortium dedicated to architecture, construction and Real Estate development, its Headquarters occupy the topmost level plus roofgarden of the Torre Glorieta Cibeles located in Mexico city.

The design of the space takes into account the necessity of these diverse activities, departments & their relationship, striving to create harmonious, comfortable spaces where all members can feel inspired to create, solve, perform and unfold best; a key objective was to make everyone feel at home, to achieve this a combination of specific light, material and spatial distribution was employed.

Location: Mexico City

Year: 2021

Built Area: 1000 m²

Floors: 18 + Roof Garden

Photography: Luis Gallardo and Jaime Navarro





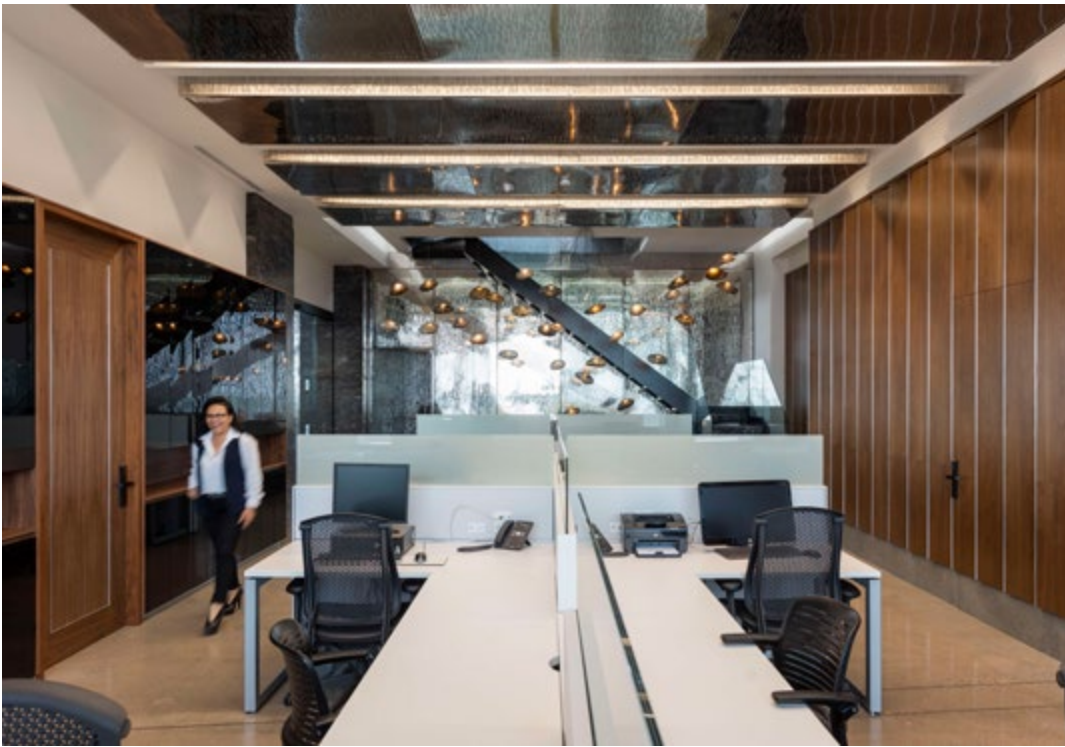
Natural and artificial light are thoughtfully employed for a healthier working environment

The connection to the exterior is given special emphasis due to the spectacular 360° views, framing them and relying heavily on natural light throughout the day. Artificial lighting is thoughtfully designed to be effective as well as ornamental, enhancing the quality of all spaces. Efficiency and sustainability are core principles in accordance to its place within a Leed Platinum certified building, all lighting and shading are controlled by a smart system with presence sensing instruments, achieving important energy savings.



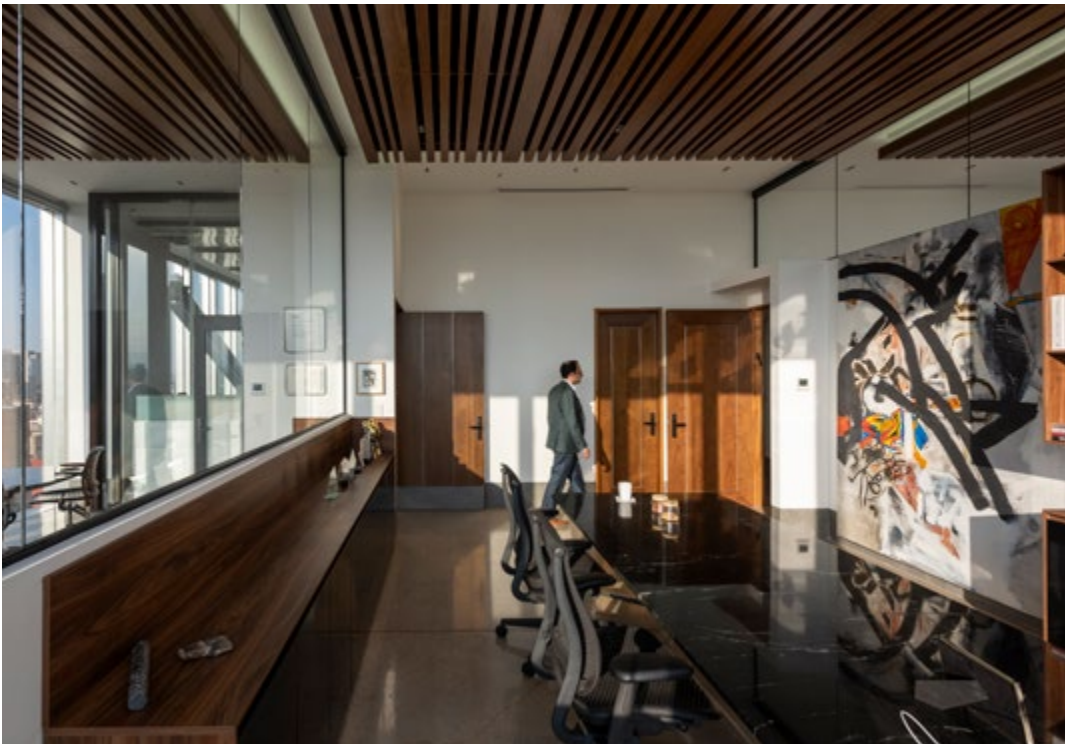






A visually attractive chromatic palette gives a special warm feeling to each space

A rich sober palette of materials reminiscent of nature is employed on different elements; the almost liquid quality of Grigio marble was used to wrap the sculptural staircase that connects the 2 levels that, together with a patterned multi-perforated stainless steel screen, evoke a waterfall tying up all spaces; the warm earthy tones of high grain walnut wood were used on the ceilings, wall veneers and furniture; rich heavy grained granite covers the columns and reception desk; black glass laminates and marble furniture play with the light; all contrasting with a polished concrete industrial looking floor.



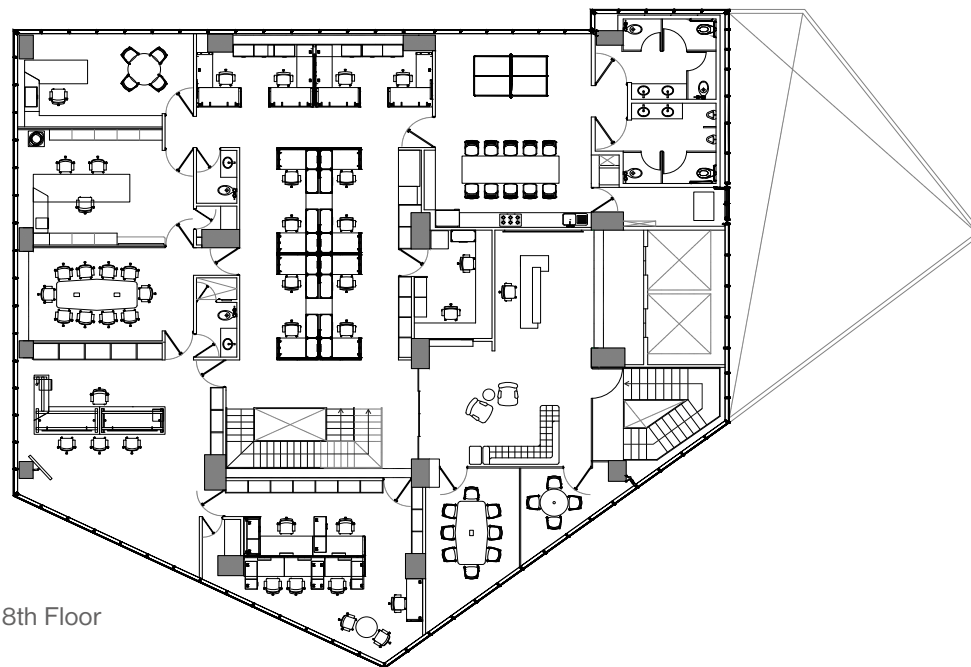
These features denote a fundamental attention to detail, creating a unique atmosphere that provides a sense of stimulation within the workspace that combines with art to create a sense of elegance and sophistication.



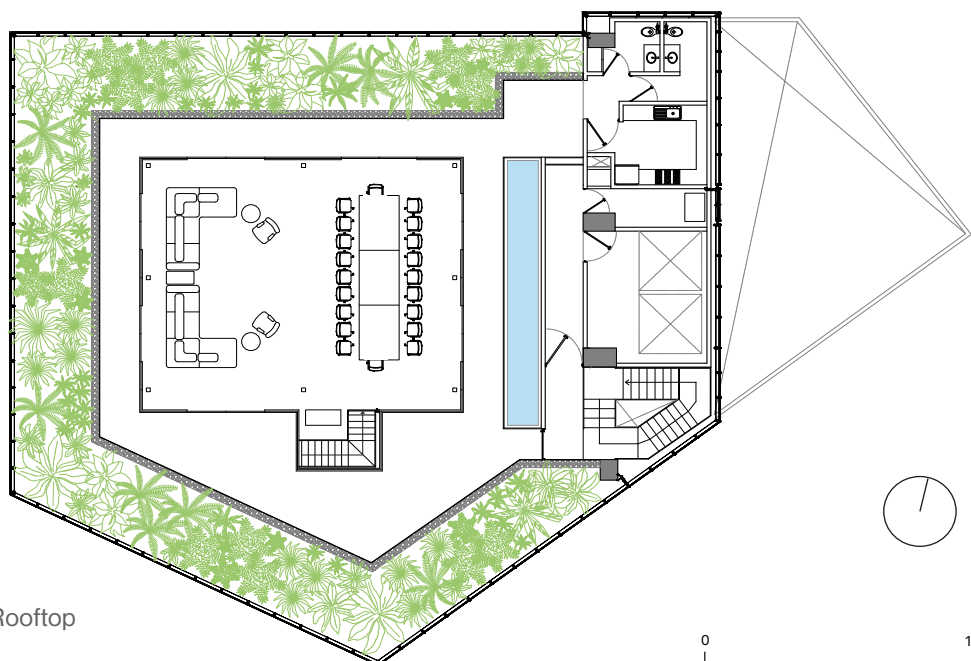
A balance between public and private spaces creates multiple environments for users to enjoy

Spatially the project strived to create a new hybrid that balances and accommodates all desired qualities of the flexible open workspace together with the very much needed quiet and concentrated private space, as well as the public social and leisure spaces; promoting effective team work, communication, a comfortable environment and staff well-being introducing a range of options to work more freely.

To such effect spaces are divided into 3, the public with different sized meeting rooms, recreation space with kitchen and ping pong table; a general wing with clusters of semiprivate workstations that enjoy central open discussion spaces; the private has offices that double as collaborative and meeting spaces.



18th Floor



Rooftop

0 10 m



A secret multipurpose space crowns the project and provides unparalleled views

Finally, at the top, a surprisingly unimaginable roof top where a central lounge opens up completely on all directions to a meditative ambulatory space, an oasis of native vegetation that creates a pleasant microclimate coupled with an enviable view and waterfall. The internal space can be configured in many ways, from daily tranquility and relaxation seeking to multipurpose presentation or celebratory environment.

CIMET Headquarters demonstrates that office spaces are fundamental to the functioning of companies, that unique and innovative spaces have significant impact on the performance and output as well as on the life quality of humans behind them.







