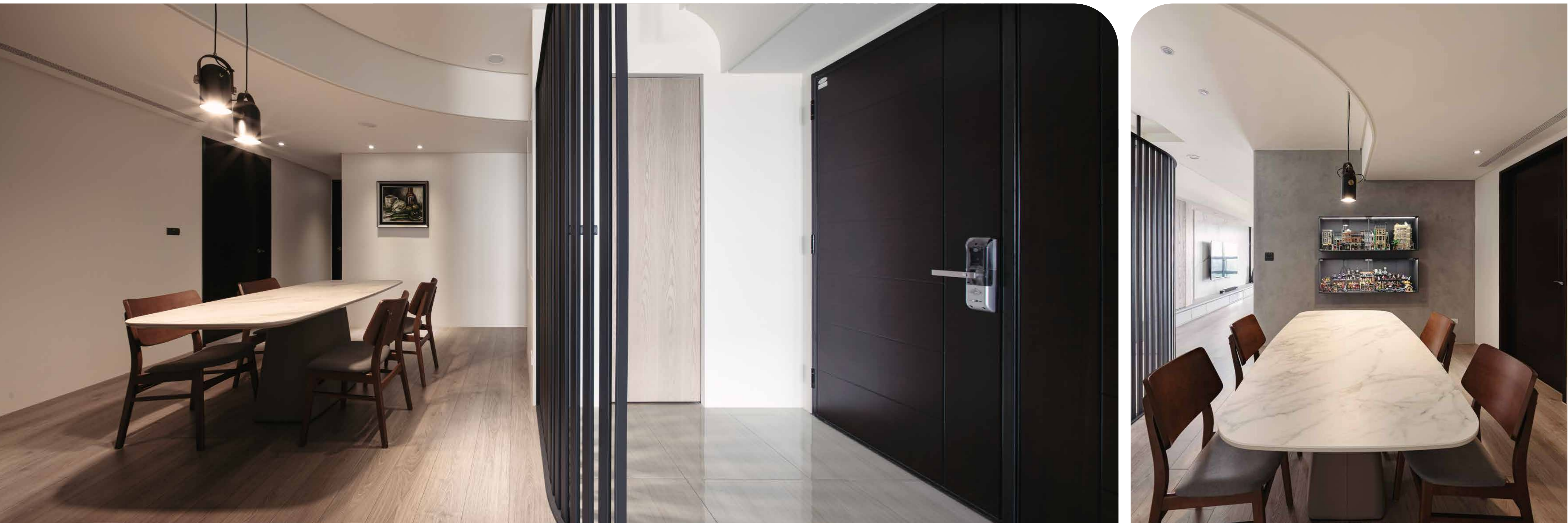


In The Name Of Love

A FAMILY OF SIX

*We aim to create a layout suitable for three generations
to stay together, converged without interferences.*





To make it work for a family of six in three generations, we focus on cohesion, removing redundant outlines to create proper flow, perfecting space allocation for happy experience.

The dining room is the core of the layout, as other functions extend from here. The living room, being the second activity area, also contributes to cross-generational gathering of six. A wall in-between sets up two-way functions that fulfill the needs of the three generations; the entrance, living and dining rooms all serve multiple uses. The flow and sophisticated functions allow the family to move freely as intimacy remains.

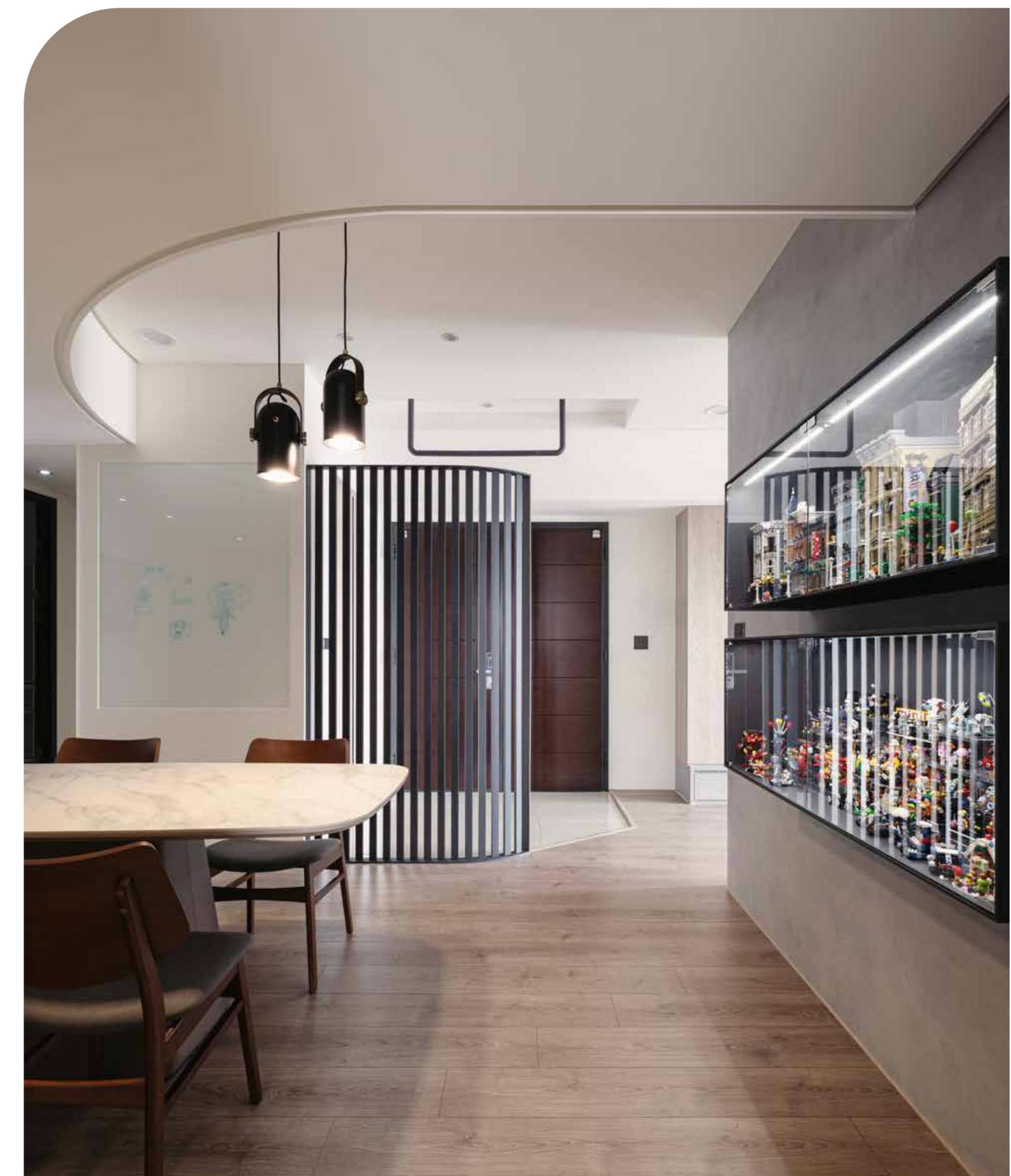
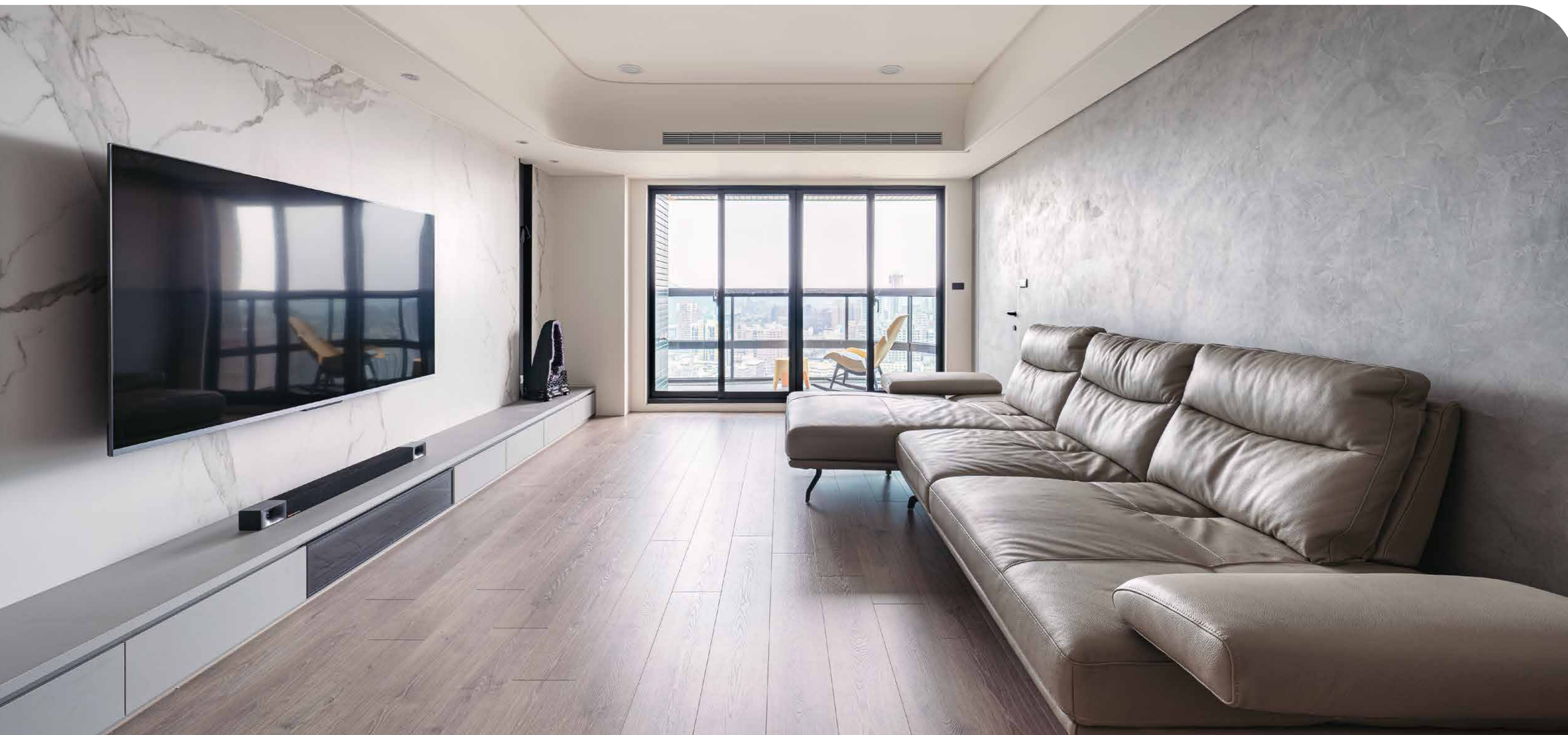


We aim to create a layout suitable for three generations to stay together, converged without interferences. By creating shared space at the right spot, the use of the space can be transformed to fulfill the needs of different generations. Family members are willing to leave their rooms to gather or do things in different areas thanks to the inclusive surroundings.



Ancestor Worship Place

To create intimacy and maintain proper distance, the grandparents' room is placed at the end of the corridor, which serves as a transition between public and private.



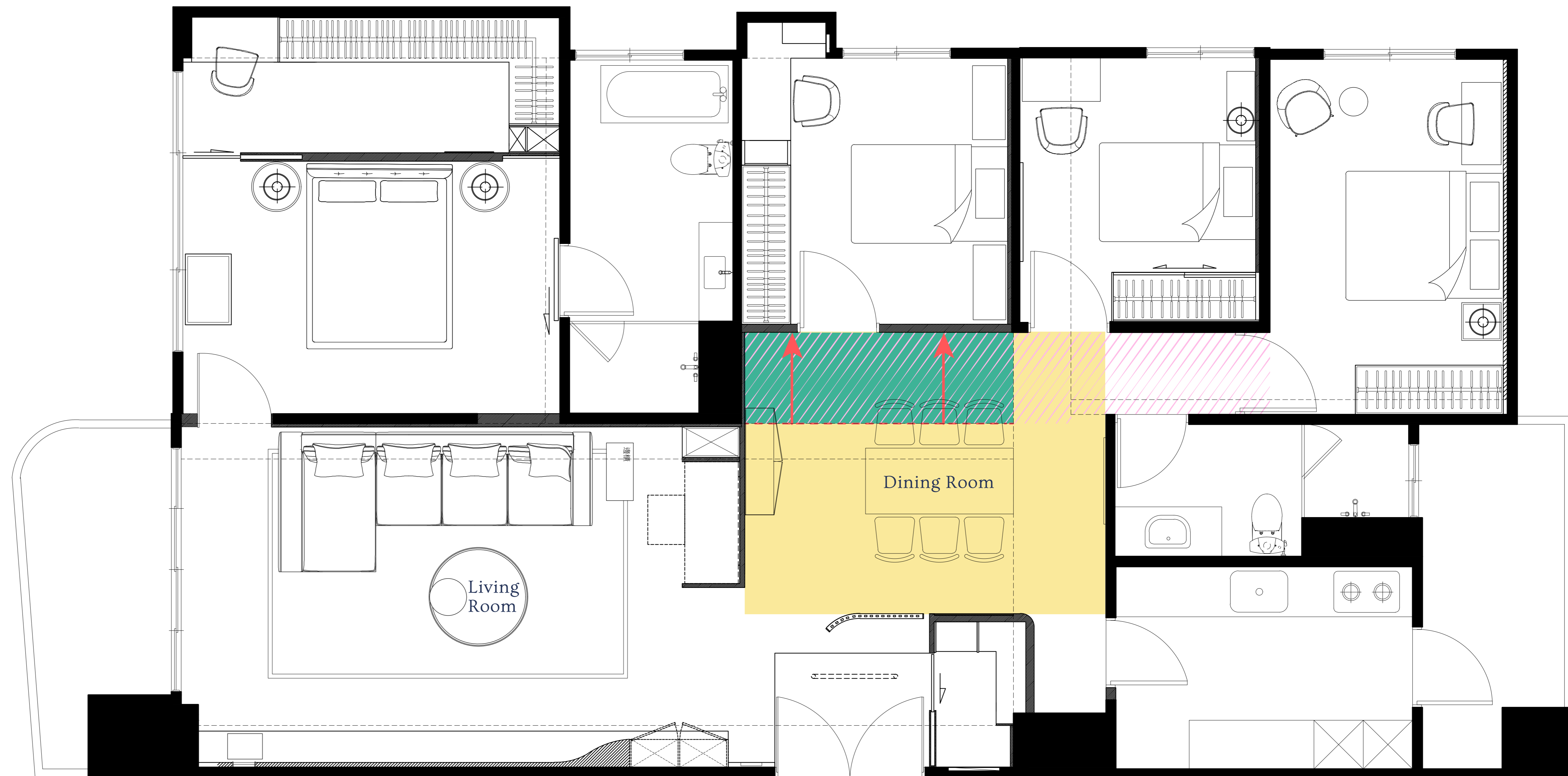
Chi

We prioritize smooth flow and proper layout instead of aesthetic outlines. Lines are used as design elements for functionality to ease the pressure of beams and expand vertical height. The facades are connected while the divisions softened. The screen at entrance improves feng-shui as it accumulates CHI, while the curved lines of the partition, ceiling and cabinets enhance the spirit of generational harmony. The curves bring out a sense of visual flow, making the transitions and surface connections smoother, spacious and relaxing.



“ The materials are balanced in color, with neutral earth tones for soft and elegant mood. The items on display are in contrasting colors, with Lego and oil paintings reflecting hobbies and the people-centric aesthetics. ”

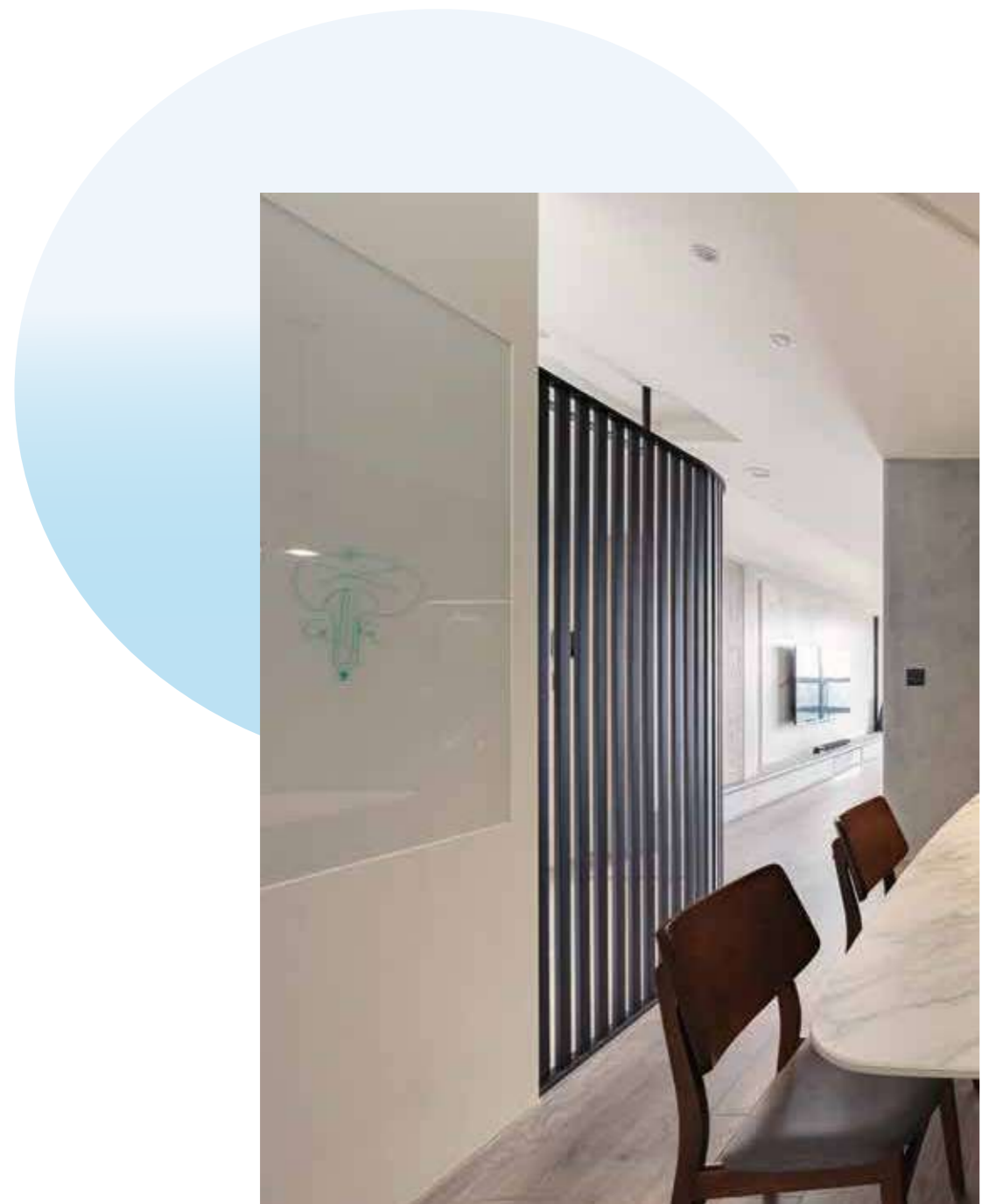
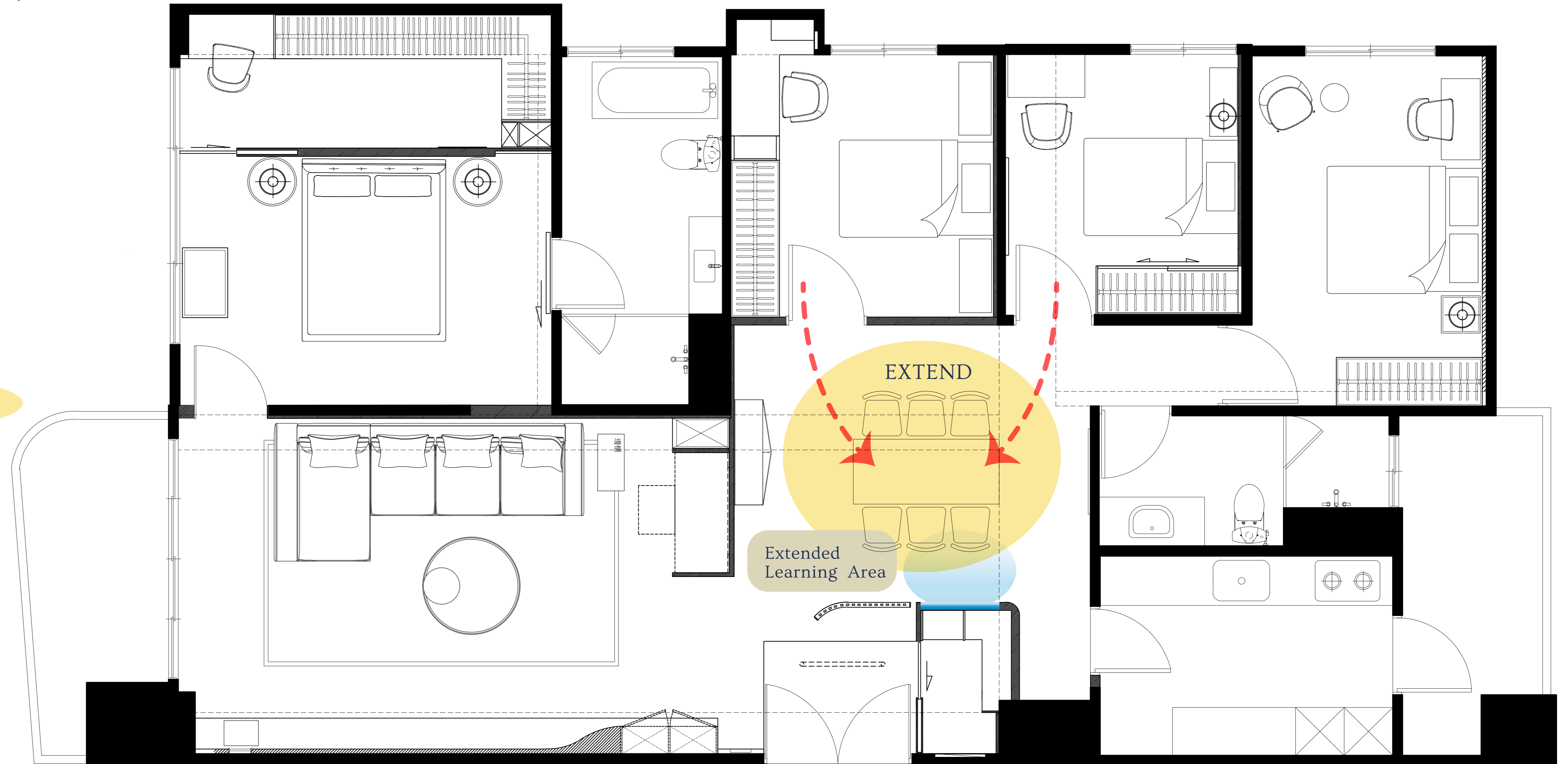
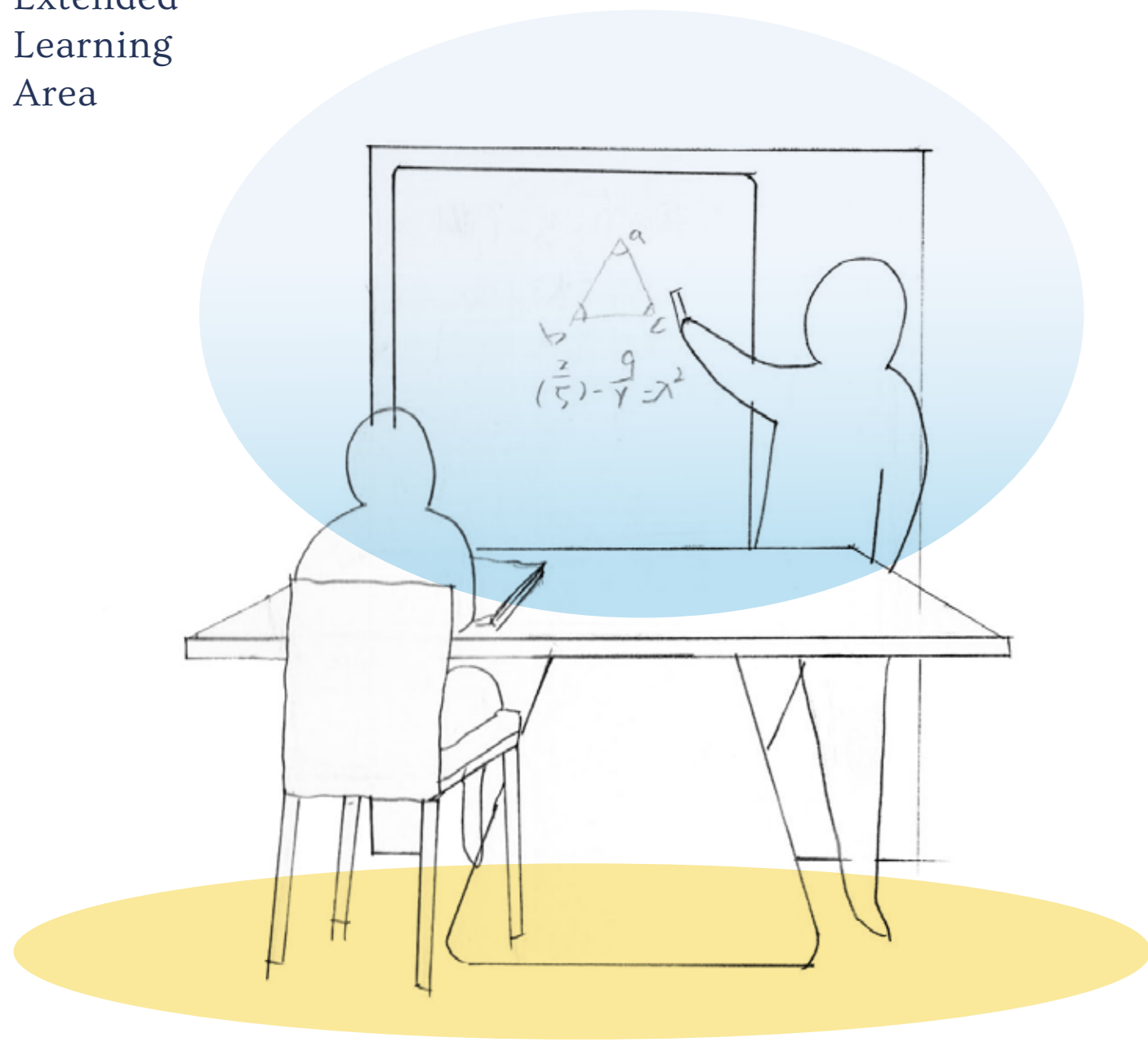




The original long and narrow dining room is now square, as it becomes the central point for all the spaces, also a place for the family of six to stay together. The dining area, being the pivot, offers open flow for smoother movement. The white wall is deliberately left as a display wall for paintings, offering the sensual function of a gallery, making it more enjoyable to stay around.

The dining area settles the overlapping flows, maintains transitional corridor into the grandparents' room, and therefore reconciles the different lifestyles.

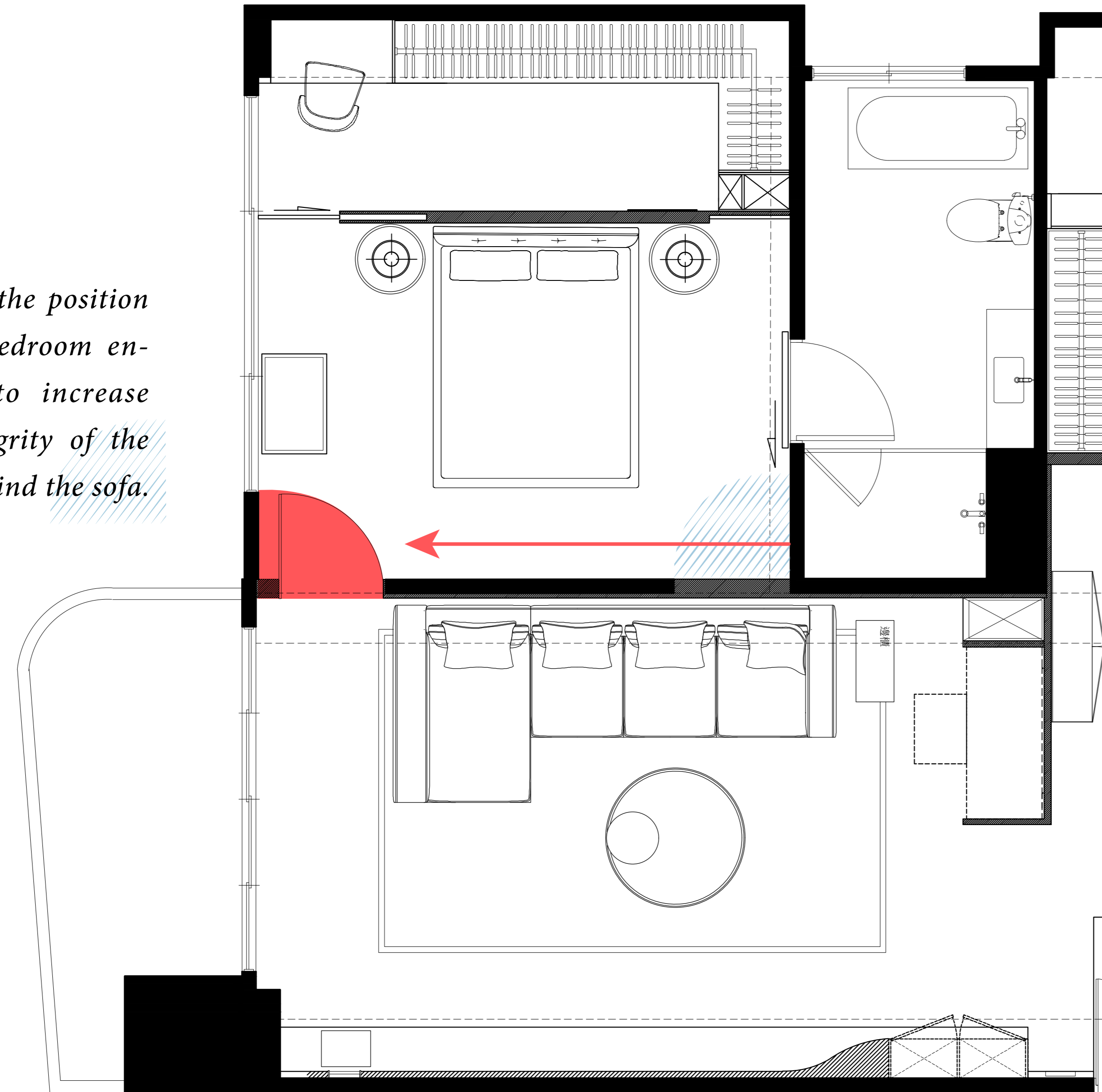
Extended Learning Area



“ The dining area is enlarged by retreating a child's room. ”

The closed corridor is opened to eliminate the void of the aisle, integrating the entrance plane of the child's room into an extended learning area.

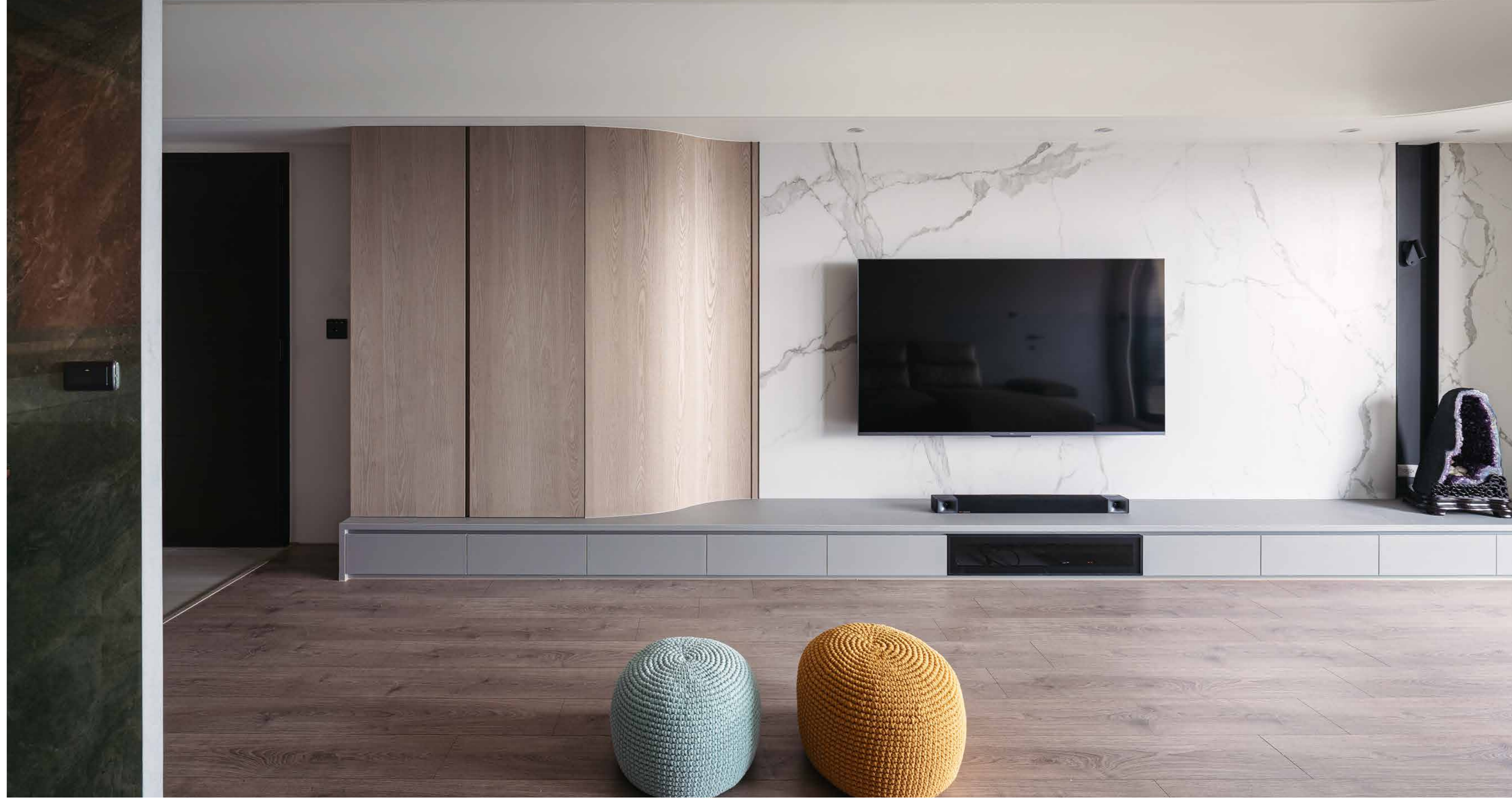
Change the position of the bedroom entrance to increase the integrity of the wall behind the sofa.



“ The division between living and dining rooms indirectly creates an independent living area for the young couple. ”

To accomplish the task of cohabitation, it is necessary to maintain independence and create family cohesion by reorganizing the layout and planning functions. The bedroom is for sleeping only, and the partial function was moved to the common area, giving the common area a complex function and creating a shared space to support family interaction.

The shared space creates a multifunctional and flexible use and an open and penetrating visual sense that can accommodate both individual preferences and the sense of intimacy around the family, satisfying the diverse living styles needed for a large family to live together.



Before renovation, there was little storage system, and the public space was filled with stuff, not at all a pleasant place to stay. In the new house, a storage room is added by the entrance, and the shoe cabinets are included to eliminate obstruction of the flow. Centralized storage prevents excessive cabinets from occupying the flow, maximizes the space and returns the use of space to people, thus making the public space a place to accommodate various activities.

“ Appropriate and reasonable interior planning can provide a friendly and interactive environment for different generations to live together harmoniously. ”